



FLORIDA DEPARTMENT OF TRANSPORTATION - DISTRICT FOUR

Henry E. Kinney Tunnel Improvements and Pedestrian Plaza Project

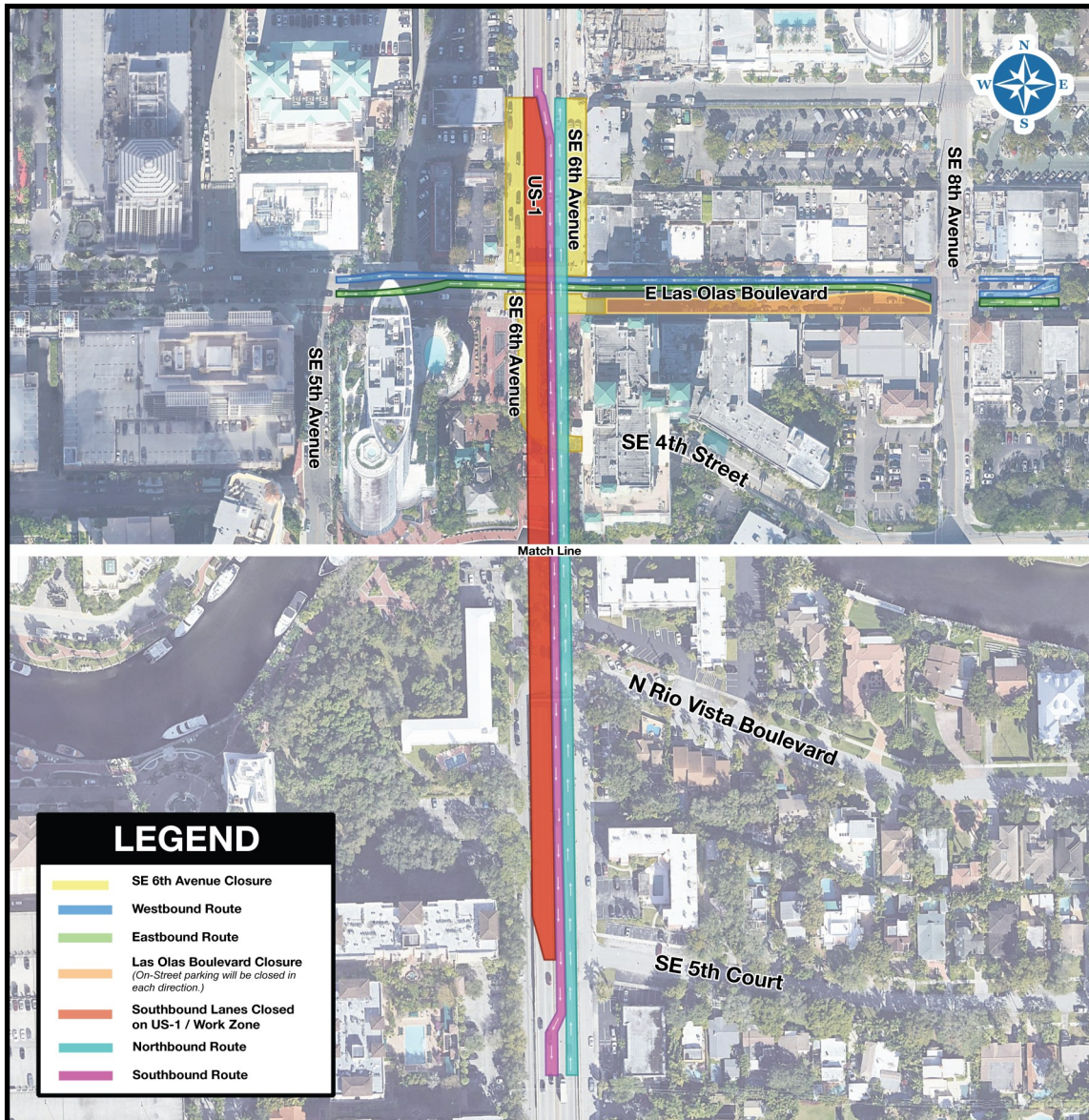
Full Closure Information Flyer

SR 5/US 1 from SR 862/I-595 to north of SR 842/Broward Boulevard Broward County, Florida

Financial Numbers:439714-1-52-01 & 439714-1-52-02

THE SOUTHBOUND US-1 TUNNEL CHAMBER TO CLOSE JUNE 17

As part of the Henry E. Kinney Tunnel Improvements and Pedestrian Plaza project, southbound US-1 within the tunnel chamber will be closed to traffic, beginning Friday morning, June 17, through early fall, for pedestrian top plaza construction operations. To ensure motorist and crew safety during this phase of construction, traffic will be shifted to northbound US-1, where one lane in each direction will be maintained at all times; signage will be in place to assist motorists.



This project will rehabilitate the structural, mechanical, electrical, architectural, and safety components of the Henry E. Kinney Tunnel; mill and resurface SR 5/ US-1 from Rio Vista Boulevard to south of the Tunnel; install Intelligent Transportation Systems (ITS) along SR 5/ US-1; extend the tunnel top to accommodate a pedestrian plaza which will include new fountains, seating facilities, re-designed brick pavers, artificial turf and landscape installation, and reconstruct the intersection of Las Olas Boulevard at SE 6th Avenue.

CONTACT INFORMATION

Heidy Cuevas, P.E. - FDOT Project Manager

Heidy.Cuevas@dot.state.fl.us or (954) 958-7653

Daniela Silva - Community Outreach Specialist

Msilva@corradino.com or 786-441-3088

Eric Pineres, P.E.– CEI Project Administrator

Epineres@bcceng.com or 305-479-7080

WEB AND SOCIAL MEDIA

Project website: www.d4fdot.com

Facebook: www.facebook.com/MyFDOTSEFL/

Instagram/Twitter: @MyFDOT_SEFL



Construction Cost: \$28.4 Million **Construction Start:** September 7, 2021 **Estimated Completion:** Late 2023

FLORIDA DEPARTMENT OF TRANSPORTATION MISSION STATEMENT
 The Department will provide a safe transportation system that ensures the mobility of people and goods, enhances economic prosperity and preserves the quality of our environment and communities.